

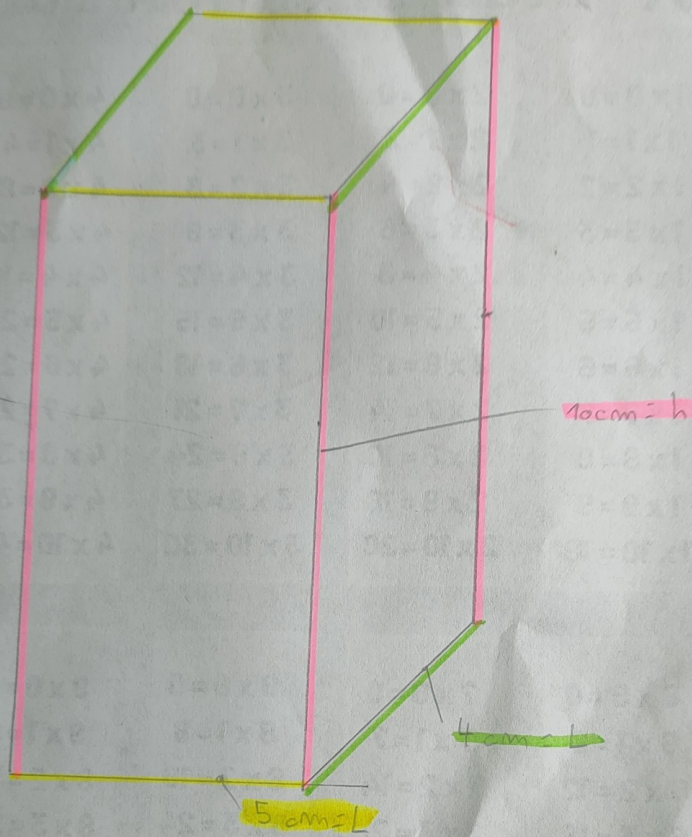
Travaux des 6°123 - semaine 4

Un verre =
 $10\text{ cm} \times 5\text{ cm} \times 4\text{ cm} = 200\text{ cm}^3$
↓ (conversion)
200 ml
↓
20 cl

20 cl

les pieds couvercle (soudable)
petit trou pour paille

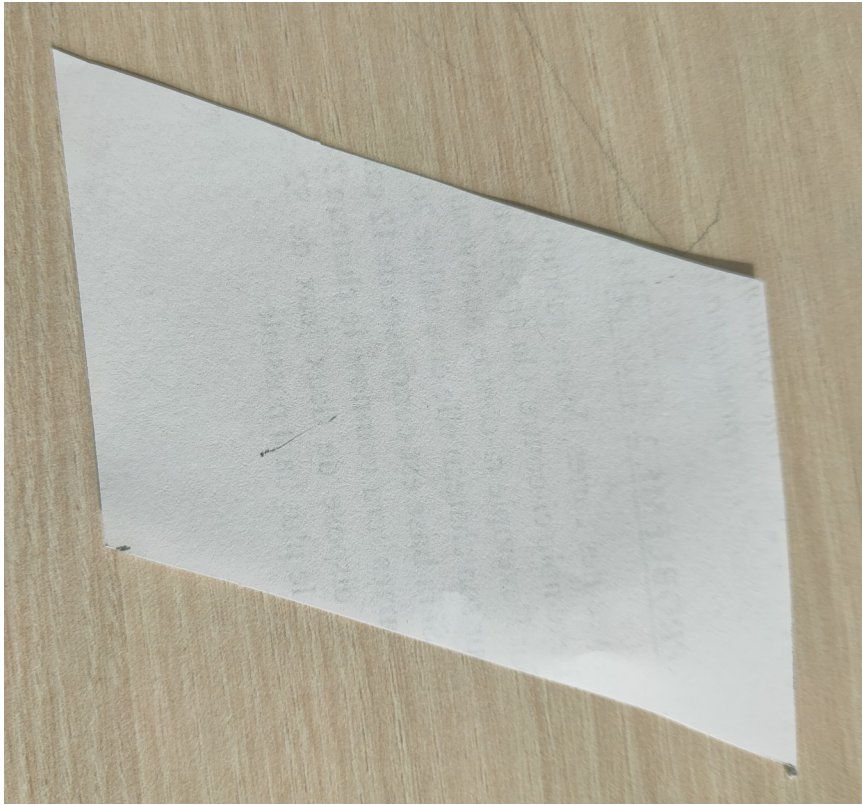
Tout les verres =
 $1000 \times 20\text{ cl}$
 $= 20\ 000\text{ cl EN TOUT!}$



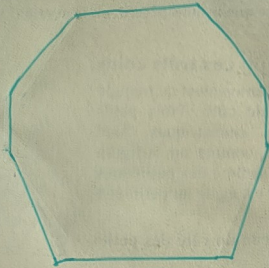
$$10\text{cm} \times 5\text{cm} \times 4\text{cm} = 200\text{cm}^3$$
$$h \times L \times l = 200\text{cm}^3$$

$$200\text{cm}^3 = 200\text{cl}$$

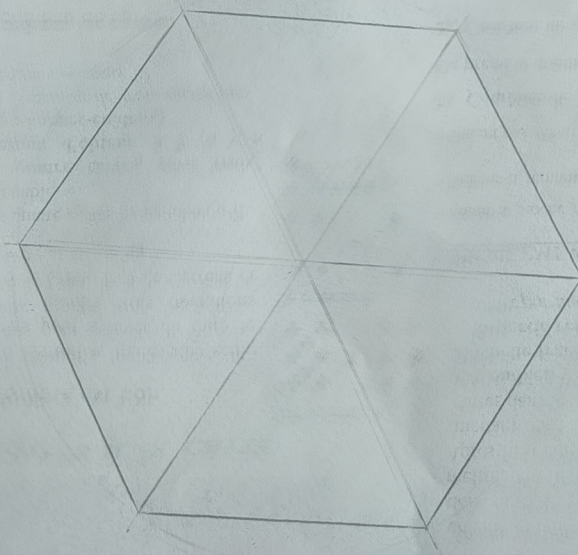
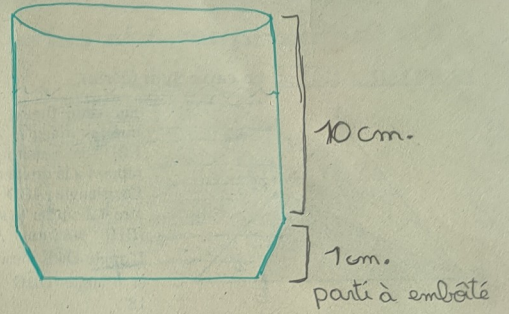
Si on veut 1000 verres de 20cl
cela fait $1000 \times 200\text{cm}^3 = 200000\text{cm}^3$

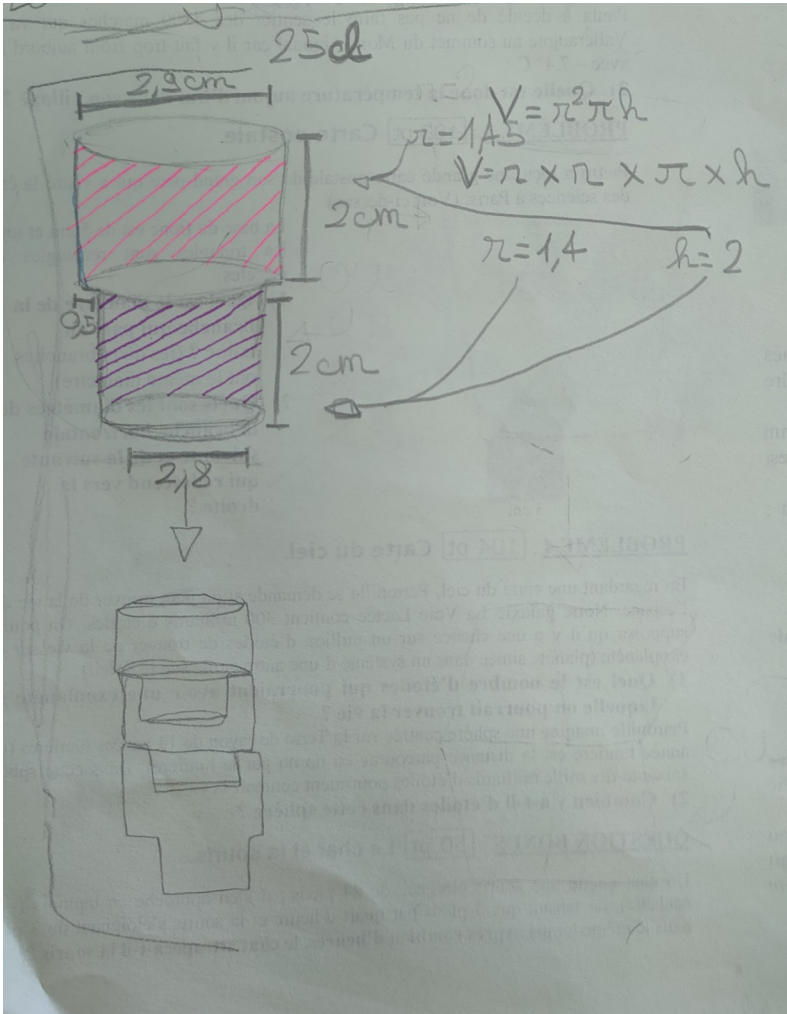


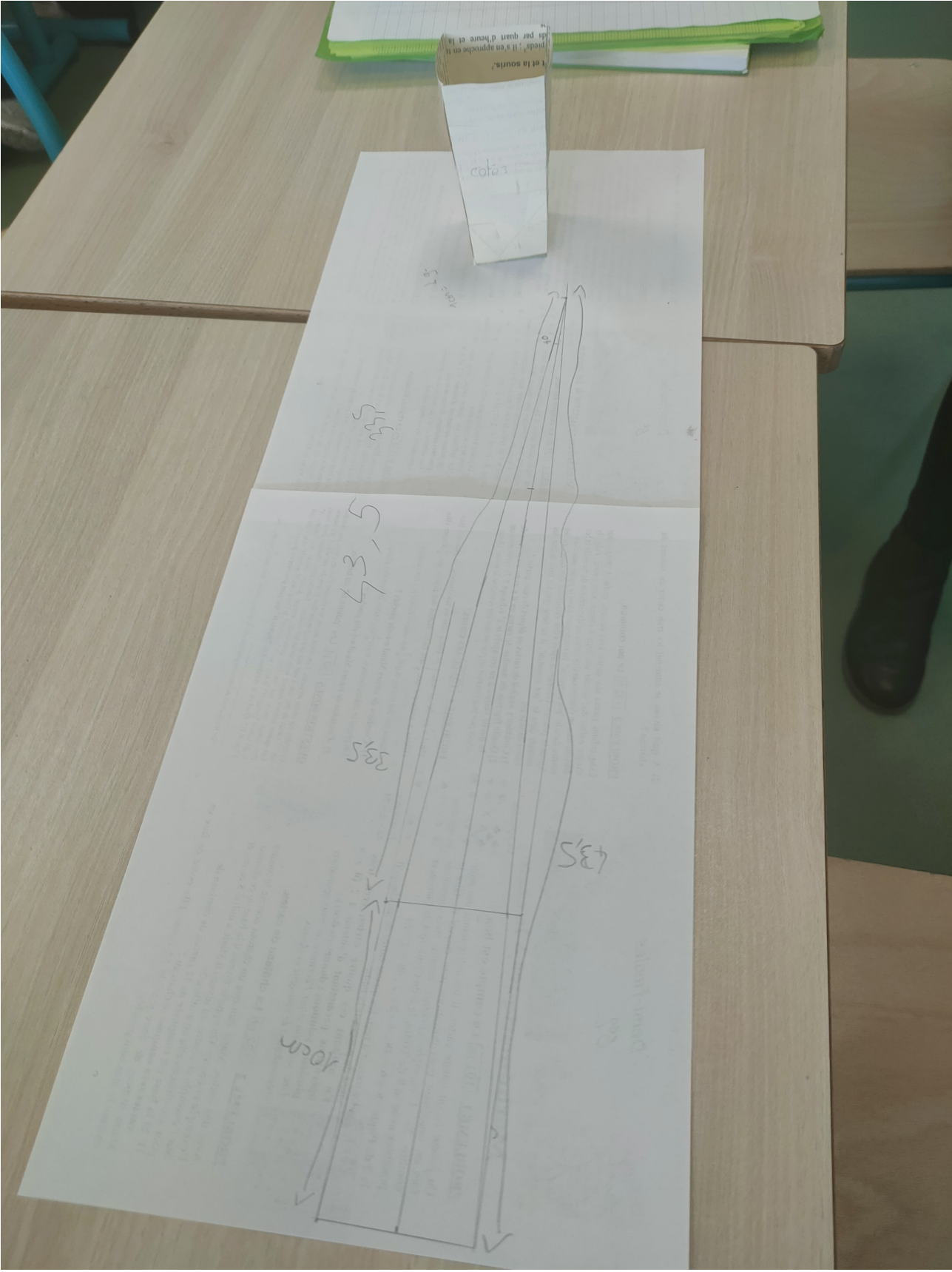
Vue d'en haut:



Vue de face:







cotés

43,5

43,5

33,5

43,5

10cm

